

GP 29 PHOTOTHEQUE DES FOSSILES DE MA COLLECTION



BR 003-01 *Terebratula bisinuata* LAMARCK



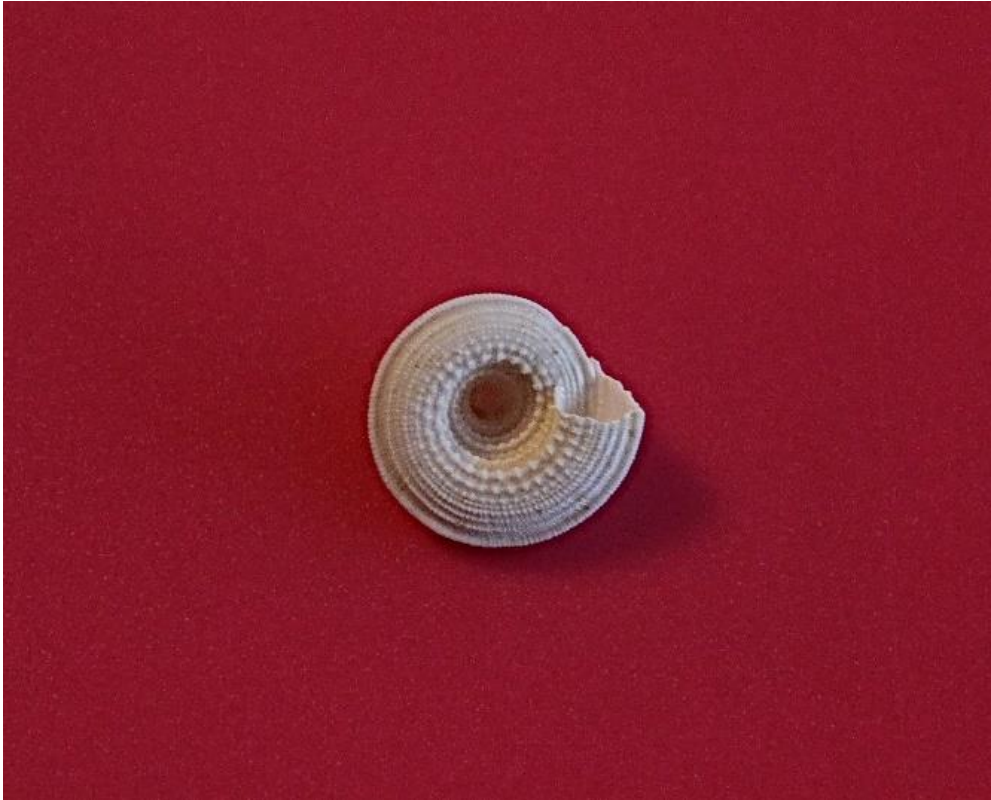
GA 009-07 *Entomella clypeata* LAMARCK 1802



GA 052-01 *Epitonium (Crisposcala) crispum* LAMARCK 1804



GA 104-06 *Architectonica (Granosolarium) canaliculata* LAMARCK 1804



GA 104-10 *Architectonica (Nipiteraxis) plicata* LAMARCK 1804



GA 104-18 *Architectonica (Nipiteraxis) ammonites* LAMARCK 1804



GA 137-45 *Campanile giganteum* LAMARCK 1804



GA 137-45 *Cerithium giganteum* LAMARCK 1804



GA 138-01 *Diastoma costellatum* LAMARCK 1804



GA 151-22 *Exechestoma interruptum* LAMARCK 1804



GA 165-01 Cassis (Morionella) harpaeformis LAMARCK 1803 – photo Christian Brion



GA 165-01 Cassis (Morionella) harpaeformis LAMARCK 1803 – photo Christian Brion



GA 166-03 *Cassidaria enodis* DESHAYES 1865



GA 169-05 *Timbellus crenulatus tricarinatus* LAMARCK 1803



GA 169-15 *Eofavartia frondosa* LAMARCK 1803 – photo Christian Brion



GA 169-22 *Crassimurex calcitrapa* LAMARCK 1803 »'(



GA 172-01 *Typhis tubifer* BRUGUIERE 1792



GA 182-01 *Metula (Celatoconus) subdecussata* D'ORBIGNY 1850



GA 190-01 *Strepsidura turgida bruxelliana* GLIBERT 1933



GA 194-01 *Sycostoma bulbus* SOLANDER 1766



Perforations d'un GA 194-01



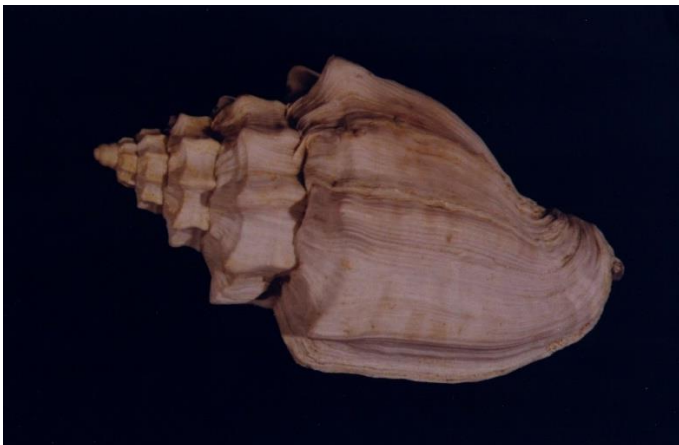
Perforations d'un GA 194-01



GA 203-01 *Cryptochorda stromboides* HERMANN 1781



GA 205-08 *Athleta (Volutospina) spinosa* LINNE 1758



GA 206-01 *Pseudolicina musicalis* LAMARCK 1802
(En provenance de la digue édiflée à droite du château)



GA 206-01 *Pseudolicina musicalis* LAMARCK 1802
(En provenance de la digue édifée à droite du château)



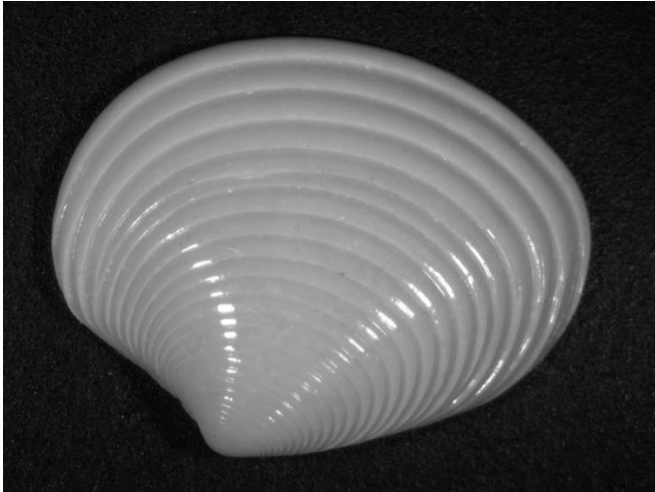
GA 216-11' *Cryptoconus lineolatus punctatus* BREBION



GA 216-13 *Cryptoconus erectus* DESHAYES 1865



PE *Chlamys plebeia* LAMARCK 1806



PE 050-40 Meretrix Tivelina elegans LAMARCK



Enpreintes de végétaux sur des huîtres







GA 151-01' *Potamides lapidorum* LAMARCK 1804



GA 162-13 *Cypraea (Cyprædia) elegans* COSSMANN 1898



GA 164-01 *Ficus (Ficopsis)tricarinatus* LAMARCK 1803



GA 164-01 *Ficus (Ficopsis)tricarinatus* LAMARCK 1803



GA 164-03 *Ficus (Ficopsis) elegans* LAMARCK 1803



GA 164-03 *Ficus (Ficopsis) elegans* LAMARCK 1803



GA 165-01 *Cassis (Morionella) harpaeformis* LAMARCK 1803



GA 167-17 *Sassia nodularia* LAMARCK 1803



GA 167-18 *Sassia bicincta* DESHAYES 1835



GA 167-22 *Eocymatium pyraster* LAMARCK 1803



GA 169-15 *Eofavartia frondosa* LAMARCK 1803



GA 169-15 *Eofavartia frondosa* LAMARCK 1803



GA 182-01 *Metula (Celatoconus) subdecussata* D'ORBIGNY 1850



GA 182-01 *Metula (Celatoconus) subdecussata* D'ORBIGNY 1850



GA 201-01 *Fusinus aciculatus* LAMARCK 1803



GA 204-01 *Volutilithes muricinus* LAMARCK 1802



GA 204-02 *Volutilithes friderici* BAYAN 1870



GA 214-08 *Conus (Leptoconus) deperditus* var. DEFRANCE 1818



GA 235-01 *Hemiauricula conovuliformis* FERUSSAC 1822



Dents de *Brachycarcarias Lerichei*



Dents de *Striatolamia*



Dents de *Jaekelotodus robustus*



Pinces de décapodes





MA 014-01 *Circophyllia truncata* GOLDF



MA 013-02 *Stylocaenia monticularia* SCHWEIGGER



MA 013-01 Stylocoenia emarciata LAMARCK



MA 010-01 Sphenotrochus crispus LAMARCK



MA 009-03 *Turbinolia dispar* DEFRANCE



MA 009-02 *Turbinolia costata* M.E et H



MA 009-01 *Turbinolia sulcata* LAMARCK



MA 007-05 *Goniopora websteri* BOWERBANK 1840



MA 007-04 *Goniopora ameliana*



MA 022-01 *Astreopora subspheroidalis* OPPENHEIM 1902